

SWEEP-ALL

B Y T U R F M A S T E R I N D U S T R I E S

OPERATOR'S MANUAL

HMW2448

HMW2460

TPW2448

TPW2460

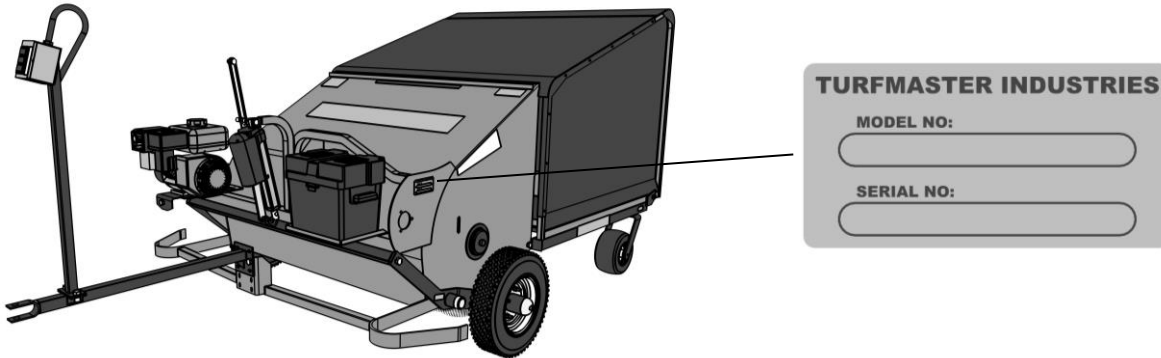


INTRODUCTION

The Sweep-All attachment clears and collects materials including gravel, aeration plugs, stones, garbage, lawn clippings, leaves, and branches. The electric or hydraulic dump system gives you added power and productivity.

This manual contains important safety, warranty, operating and maintenance information for HPW-2448, HPW-2460, TPW-2448, TPW-2460, HMW-2448, and HMW-2460 models. Become familiar with the contents to avoid personal injury and product damage. Keep a record of your model and serial numbers so that they are at the ready should your unit require service.

Model & Serial Numbers



Record your model and serial numbers below for your records:

Model No. _____ Serial No. _____

SAFETY INSTRUCTIONS

Do not operate the sweeper until you have read and understand the safety decals and operating instructions.

Operating Safety

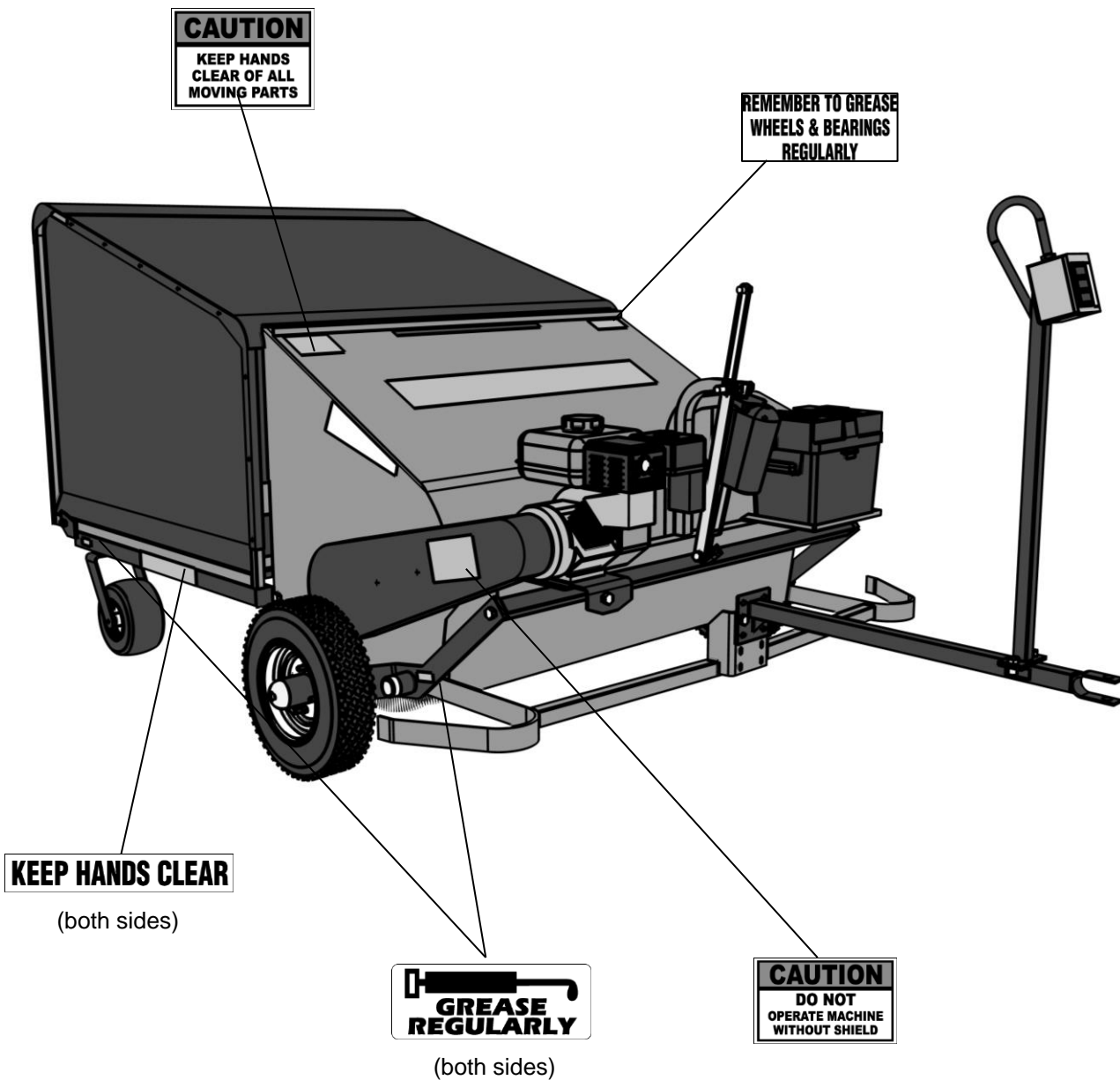
- Keep all safety decals clean and legible at all times. Replace damaged or missing decals.
- Keep all shields and guards in place and in good order at all times.
- Make sure the area is clear of people before operating.
- Do not operate unit except when in the operator's station of the power unit.
- Do not permit any riders.
- Make sure unit is stopped and keys are out of the power unit before servicing, adjusting, or repairing.
- Never operate over 540 RPM PTO speed.
- Inspect and clean the brush and shroud before operating.
- Do not operate sweeper in raised position.
- Keep hands, feet and clothing away from moving parts.
- Ensure all controls are in neutral before starting power unit.
- Never allow children to operate the unit.
- Never operate the unit while under the influence of drugs or alcohol.
- Wear proper shoes and safety apparel.
- Use caution on slopes.
- Use caution when backing up and preparing to dump.
- Keep bystanders clear of the dumping area.

Transport Safety

- Do not transport on a public road without a slow moving vehicle sign and flashers on the power unit.
- Make sure unit is in raised position during transport and is stable when driving.

Safety and Instruction Decals

Take note of the locations of all the safety and instruction decals. Keep all safety decals clean and legible at all times. Replace damaged or missing decals



WARRANTY

Turfmaster Ind. Inc. products are warranted for a period of 1 year (12 months) from the original date of purchase by the original owner. Products are warranted to be free from defects in material and workmanship under normal intended use and service of the equipment.

Turfmaster's obligations under this warranty shall be limited to the repair or replacement of the part at Turfmaster's option, when it is deemed defective by Turfmaster. Turfmaster reserves the right to repair or replace the defect. At Turfmaster's discretion, the defect may be repaired on site or at the production plant. Warranty is limited to the price received for the product. Turfmaster is not liable for any accidental or consequential damages whatsoever including expense of substitute equipment. Turfmaster Ind. has no express warranties other than those described in this warranty. Descriptions of goods included in catalogues, circulars, or any other published material does not create an implied warranty.

Maintenance, tune-ups, lubrication, cleaning, and other operating expenses are to be paid by the owner.

Warranty Claims

Warranty Claims must be submitted within 30 days of the failure. All warranties must be approved by Turfmaster. Labour will be credited at a rate determined by Turfmaster.

Schnell Industries Inc
450 Roblin Blvd East
Winkler, MB R6W 0H2 Canada
Schnell 1-204-331-3050
TurfMaster 1-204-331-3082

Exclusions

- Damage caused by third part post-production parts or accessories not approved by Turfmaster.
- Normal noise, vibration, deterioration, wear and tear
- Shipping costs
- Wear on consumable parts such as brushes, chains, sprockets, baskets, and bodies of the unit
- Damage caused by alterations made without written approval by Turfmaster Ind.
- Damage caused by abusive, negligent, or reckless operation.
- Failures caused by outside influences including but not limited to weather, storage and improper maintenance.

Sweep-All Series Warranty Registration, Turfmaster / Schnell Industries Inc

Certificate # _____

Date Purchased _____

Issued To

Name _____

Street _____

City _____

Province / State _____

Postal Code / Zip Code _____

Model Number _____

Serial Number _____

Customer Signature _____

Sweep-All Dealer

Name _____

City _____

Province / State _____

Dealer Signature _____

CONNECTING TO THE POWER UNIT

HPW – 2448 & 2460

- Back the tractor slowly to the front of the sweeper, lift the sweeper hitch to the tractor hitch, insert the hitch pin and secure.
- With the engine of the tractor shut off, attach the PTO shaft to the tractor.
- Turn the collar of the PTO shaft clockwise to line up the splines to the tractor shaft.
- Always make sure both ends of the PTO shafts are properly secured before starting with the PTO shaft, allowing enough slack for the shaft to move during turns and lifting during operation.
- Hook up electrical outlets.
- Check booklet on PTO instructions

TPW – 2448 & 2460

- Back the tractor slowly to the front of the sweeper. Adjust arms of the three point hitch to align with the height of the sweeper lift pins.
- Stop tractor, apply park brake and remove key.
- Slide the three point hitch arms on the lift pins and secure with the pins provided.
- Shut the tractor off, remove the key, and attach PTO shaft to the tractor. Turn the collar of the PTO shaft clockwise to line up splines to the tractor shaft. The spring loaded pin on the PTO shaft must lock into the groove on the tractor shaft.
- Always make sure both ends of the PTO shaft are properly secured before starting the tractor. Attach the safety chain supplied with the PTO shaft allowing enough slack for the shaft to move in and out during turns and to lift during operation.
- Hook up electrical outlets.
- At least one third of the telescoping length of the PTO should overlap when the sweeper is in operation.

HMW – 2448 & 2460

- Back the tractor slowly to the front of the sweeper, lift the sweeper hitch to the tractor hitch, insert the hitch pin and secure.

FIELD USE PREPARATION

Park the unit on level ground with the sweeper slightly raised.

HPW – 2448 & 2460 / HMW – 2448 & 2460

- Adjust the height of the sweeper hitch so that it is parallel to the ground.
- Adjust the height of the sweeper brush so that it is just above the ground.

TPW – 2448 & 2460

- Adjust the sway arms on the tractor so that the sweeper is centred between the wheels.
- Adjust the arms of the three point hitch to level with the sweeper side-to-side.
- Adjust the top arm of the three point hitch to level the sweeper front-to-back so that the bottom edge of the side panel of the sweeper is parallel to the ground
- Adjust the sweeper brush height with spacers on the wheel yoke so that the tip of the brush is just above the ground.

All Units

- Check the oil level in the gear box.
- Grease all wheels, bearings, and PTO shaft according to the maintenance section.
- Check all bolts and hardware as per maintenance section.
- Clear the working area of all foreign objects and make sure all bystanders are clear before starting.
- Start power unit (slowly engage PTO drive and bring to 540PTO speed on PTO models only)

OPERATION

Operating Parameters

The sweepers are designed to be used for the following situations:

HPW – 2448 & 2460: to be towed by a tractor with 540 PTO.

TPW – 2448 & 2460: to be towed by a tractor Category 1 TPH 540 PTO, at a speed of 3 – 8 miles per hour.

HMW – 2448 & 2460: to be towed by a tractor, quad, ATV, gator, etc.

For sweeping grass clippings, leaves and other debris, adjust the brush so that it is approximately half way into the grass. For de-thatching and removing gravel, keep the brush approximately ½" off of the soil.

WARNING: Do not lower the brush too far into the soil. Doing so will over-torque and burn out the gear box clutch. This damage is not covered by warranty.

Operating Procedures

- Adjusting the brush height determines how aggressively you will clean the area. Use the stainless steel adjustment bar to set your brush.
- Always run PTO models at 540 PTO speed.
- When the basket is full, stop the sweeper. Drive to the dump area and raise the basket (using the switch mounted to the power unit) until it is completely emptied of debris. Lower the basket and resume clean-up.
- Do not lower the brush so low that the bristles bend.
- Disengage PTO when the tractor is stopped and the brush is lowered (PTO models only)

DISCONNECTING & STORING

Park the unit on level ground and clean the sweeper. Always store the unit in a dry, clean environment.

TPW – 2460

- Lower the sweeper until the load is off the three point hitch arms.
- Disconnect arms and PTO shaft.

MAINTENANCE

Service & Maintenance Safety

- Stop engine, set brake and remove key before servicing.
- Block up unit before working beneath unit.
- Replace all shields and guards before operating.
- The HMW models use 10W30 synthetic oil in the motor and gear box.

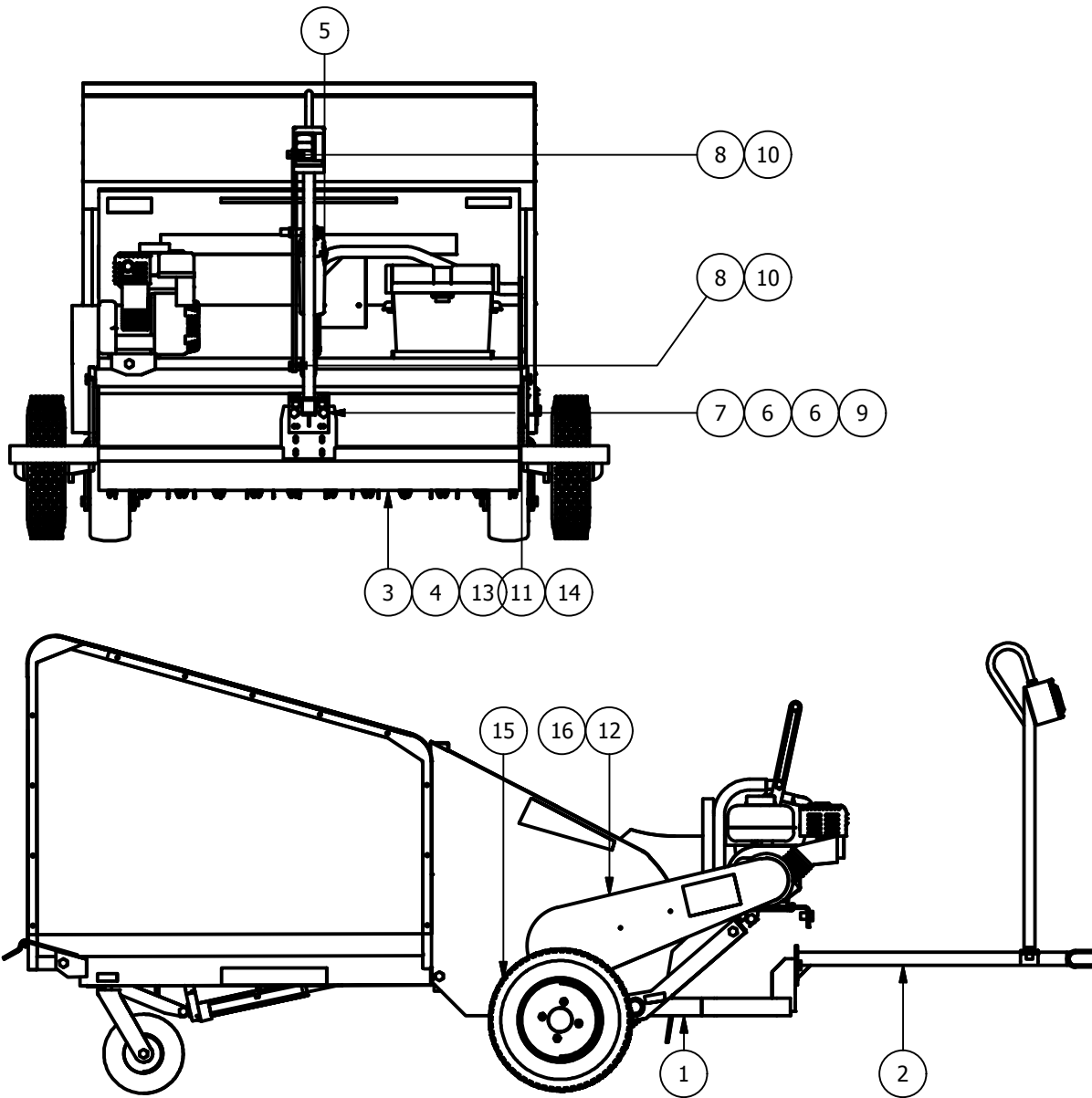
Gear Box

- The gear box is not filled with oil at the factory. Fill the gear box with SAE-90 oil.
- Check oil level approximately every 40 hours of use.
- Clean the breathers in the gear box regularly on the TPW – 2448 & 2460 and the HPW – 2448 & 2460 models

Lubrication

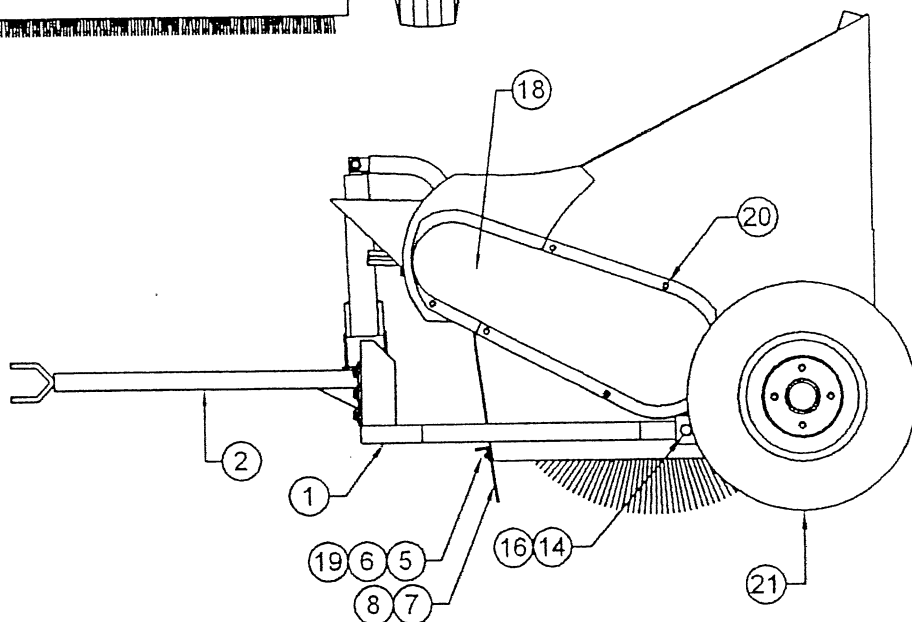
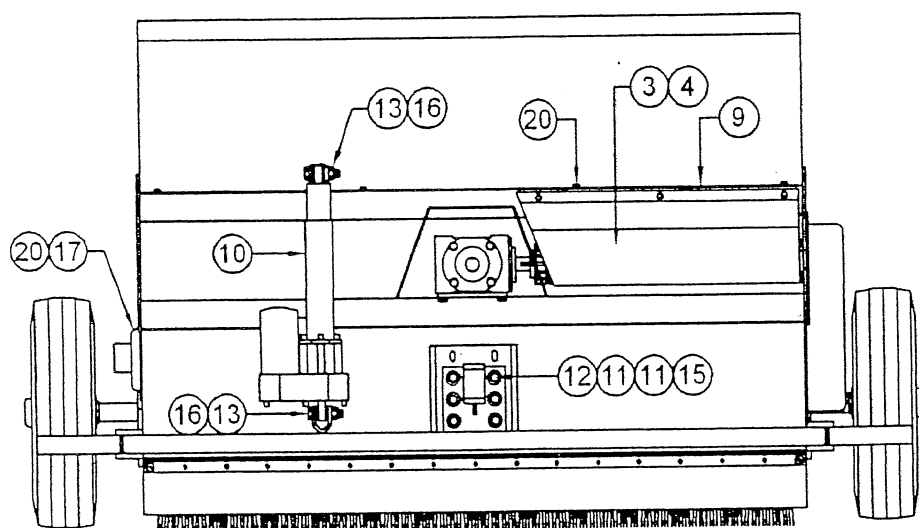
- Grease spindles, wheel yokes, and PTO shaft joints every 8 hours of use.
- Grease wheel bearings so that grease squeezes out of the wheel hub.
- Clean all grease nipples before greasing. Replace if damages occurs.
- Check all guards and shields, making sure they are secure. Replace or repair damaged components.
- Check brushes and housing. Clean if required so that it does not plug up.
- Oil the chain and sprockets with chain lubricant.
- Check all bolts periodically

HMW-2448 & HMW-2460



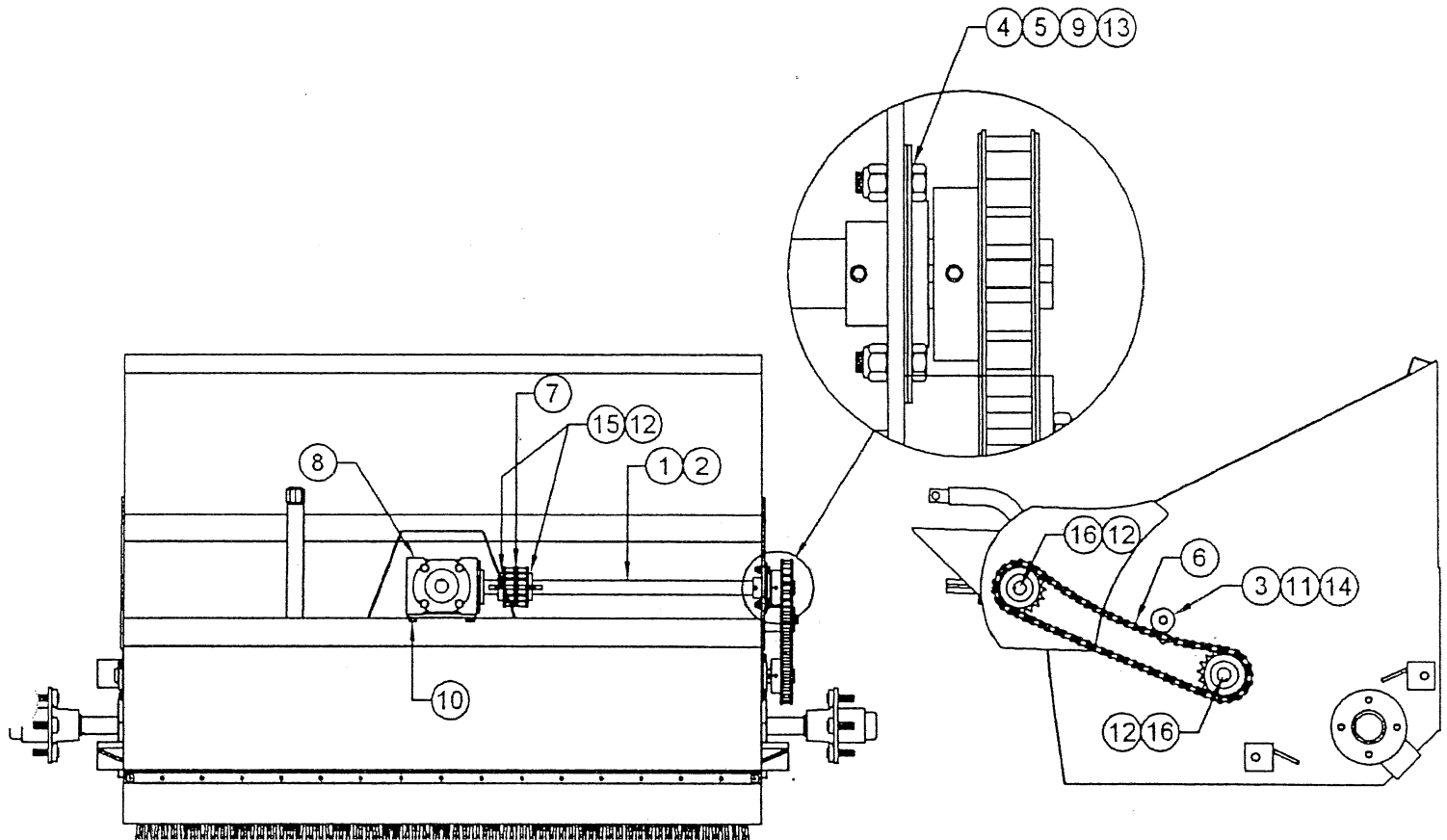
REF	DESCRIPTION	QTY
1	HITCH/ACTUATOR MOUNT SUB ASSEMBLY	1
2	HITCH SUB ASSEMBLY	1
3	FLAP ANGLE	1
4	RUBBER FLAP	1
5	12 V ACTUATOR	1
6	USS FLAT WASHER - 3/8" PLTD	12
7	HEX BOLT - 3/8" x 1 1/4" - UNC - PLTD - GRD 5	6
8	HEX BOLT - 1/2" x 2 1/4" - UNC - PLTD - GRD 5	2
9	NYLON INSERT LOCK NUT - 3/8" UNC - PLTD - GRD 5	6
10	NYLON INSERT LOCK NUT - 1/2" UNC - PLTD - GRD 5	4
11	ROTOR SHAFT END GUARD	1
12	BELT / CHAIN GUARD	1
13	STEEL RIVET - 3/16" x 3/4"	17
14	SELF TAPPING SCREW	15
15	WHEEL WITH REG TIRE & NUTS	2
16	B-63 BELTS	2

HPW-2448 & HPW-2460



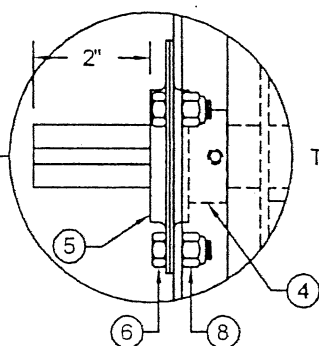
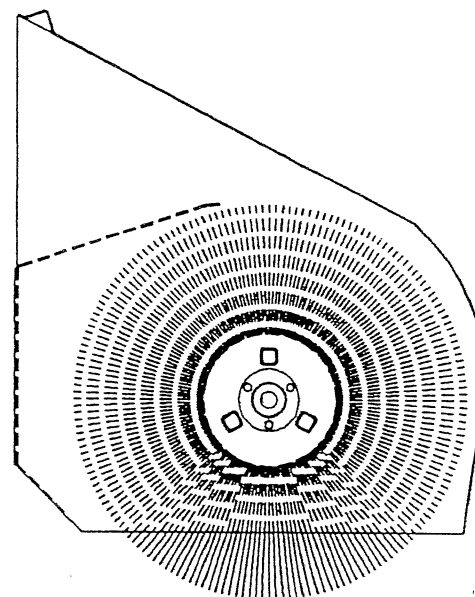
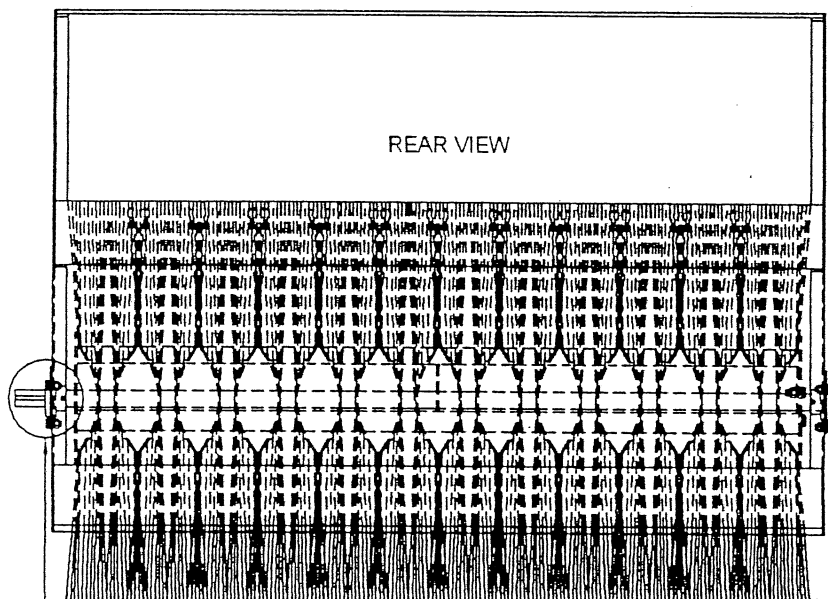
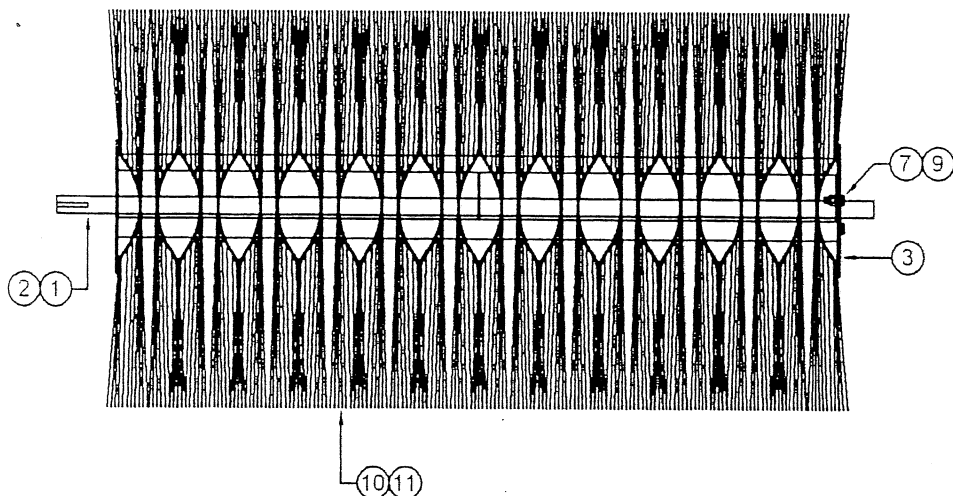
REF	DWG OR PART #	DESCRIPTION	QTY
1	GD2448-4005	HITCH / ACTUATOR MOUNT SUB ASSEMBLY	1
2	GD2448-4006	HITCH SUB ASSEMBLY	1
3	HPW2448-0003 **	DRIVE SHAFT SHIELD	1
4	HPW2460-0001 **	DRIVE SHAFT SHIELD	1
5	TPW2448-0021 **	FLAP ANGLE	1
6	TPW2460-0014 **	FLAP ANGLE	1
7	TPW2448-0045 **	RUBBER FLAP	1
8	TPW2460-0015 **	RUBBER FLAP	1
9	TPW2448-0051	DRIVE SHAFT SHIELD	1
10	AC-0000-0010	ACTUATOR - 12V - 10" STROKE	1
11	FW-1000-0375	USS FLAT WASHER - 3/8" - PLTD	12
12	HB-0375-1250	HEX BOLT - 3/8" x 1 1/4" - UNC - PLTD - GRD 5	6
13	HB-0500-2250	HEX BOLT - 1/2" x 2 1/4" - UNC - PLTD - GRD 5	2
14	HB-0500-3000	HEX BOLT - 1/2" x 3" - UNC - PLTD - GRD 5	2
15	LN-0000-0375	NYLON INSERT LOCK NUT - 3/8" UNC - PLTD - GRD 5	6
16	LN-0000-0500	NYLON INSERT LOCK NUT - 1/2" UNC - PLTD - GRD 5	4
17	SH-0000-0001	ROTOR SHAFT END GUARD	1
18	SH-0000-0002	CHAIN GUARD	1
19	SR-0188-0750	STEEL RIVET - 3/16" x 3/4"	17
20	ST-0000-0250	SELF TAPPING SCREW	15
21	WT-0000-3000	WHEEL WITH REG TIRE - 4.80-8NHS - WITH NUTS	2

HPW-2448 & HPW-2460



REF	DWG OR PART #	DESCRIPTION	QTY
1	TPW2448-0048 **	DRIVE SHAFT	1
2	TPW2460-0016 **	DRIVE SHAFT	1
3	TPW2448-0049	CHAIN ADJUSTER	1
4	BC-0000-1000	BEARING & COLLAR FOR 1" SHAFT	1
5	BP-0000-1000	BEARING FLANGE PLATE	2
6	CH-1000-5036	#50 CHAIN & FULL CONNECTOR - 36 LINK	1
7	CH-2000-5006	DOUBLE #50 CHAIN & FULL CONNECTOR - 6 LINK	1
8	GB-0000-1000	C-CW1003 GEAR BOX	1
9	HB-0313-0750	HEX BOLT - 5/16" x 3/4" - UNC - PLTD - GRD 5	3
10	HB-0375-1000	HEX BOLT - 3/8" x 1" - UNC - PLTD - GRD 5	4
11	HB-0375-3250	HEX BOLT - 3/8" x 3 1/4" - UNC - PLTD - GRD 5	1
12	KE-0250-1500	KEY - 1/4" x 1 1/2"	4
13	LN-0000-0313	NYLON INSERT LOCK NUT - 5/16" - UNC - PLTD - GRD 5	3
14	LN-0000-0375	NYLON INSERT LOCK NUT - 3/8" - UNC - PLTD - GRD 5	1
15	SP-5012-1000	50BS12 SPROCKET - 1" BORE	2
16	SP-5018-1000	50BS18 SPROCKET - 1" BORE	2

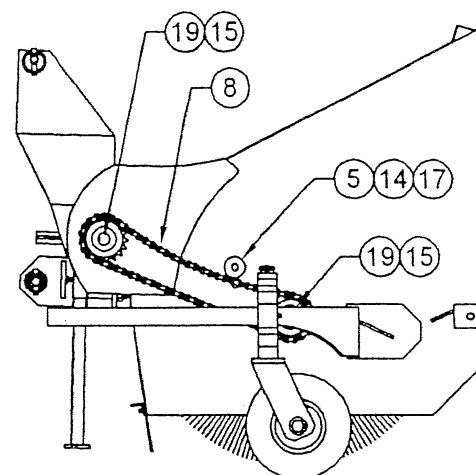
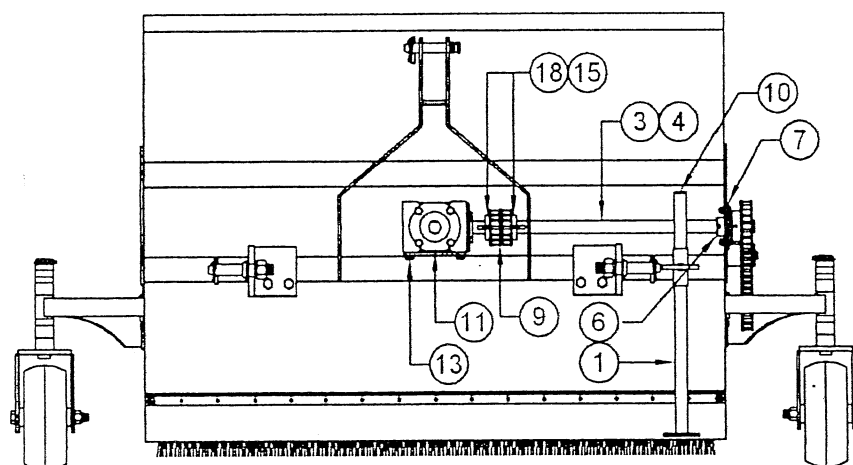
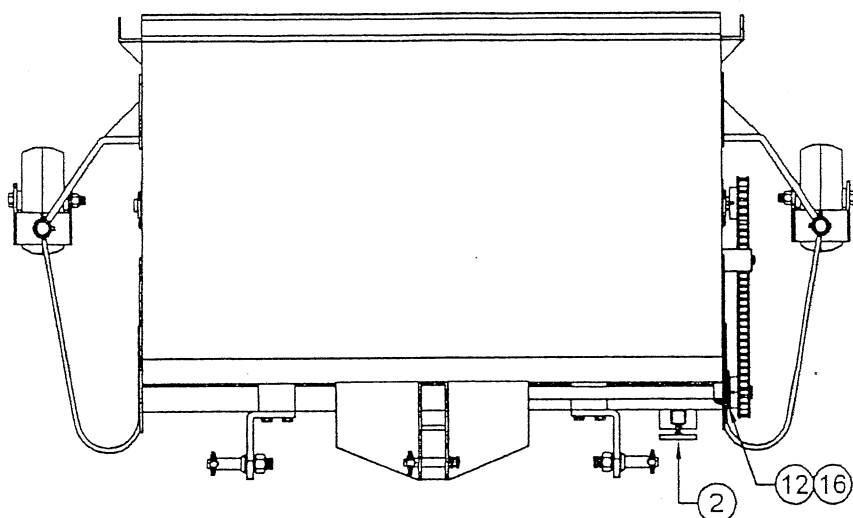
TPW & HP SERIES



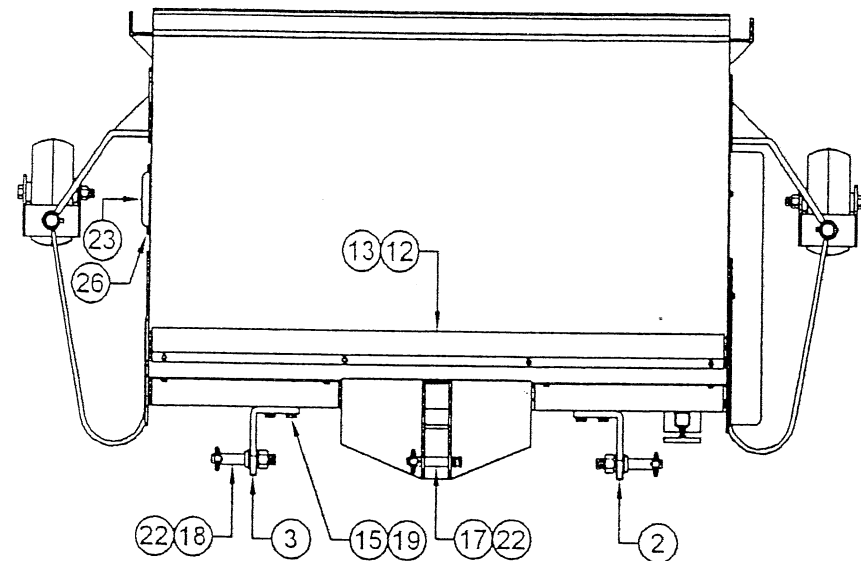
TYP BOTH ENDS

REF	PART #	DESCRIPTION	QTY
1	TPW2448-4008 **	BRUSH ROTOR SUB ASSEMBLY	1
2	TPW2460-4005 **	BRUSH ROTOR SUB ASSEMBLY	1
3	TPW2448-0026	BRUSH ROTOR PRESSURE PLATE	1
4	BC-0000-1000	BEARING & COLLAR FOR 1" SHAFT	2
5	BP-0000-1000	BEARING FLANGE PLATE - 1" SHAFT	4
6	HB-0313-0750	HEX BOLT - 5/16" x 3/4" - UNC - PLTD - GRD 5	6
7	HB-0375-1000	HEX BOLT - 3/8" x 1" - UNC - PLTD - GRD 5	3
8	LN-0000-0313	NYLON INSERT LOCK NUT - 5/16" - UNC - PLTD - GRD 5	6
9	LN-0000-0375	NYLON INSERT LOCK NUT - 3/8" UNC - PLTD - GRD 5	3
10	SB-2400-1000 **	TPW2448 - CONVOLUTED SWEEPER BRUSH	24
11	SB-2400-1000 **	TPW2460 - CONVOLUTED SWEEPER BRUSH	30

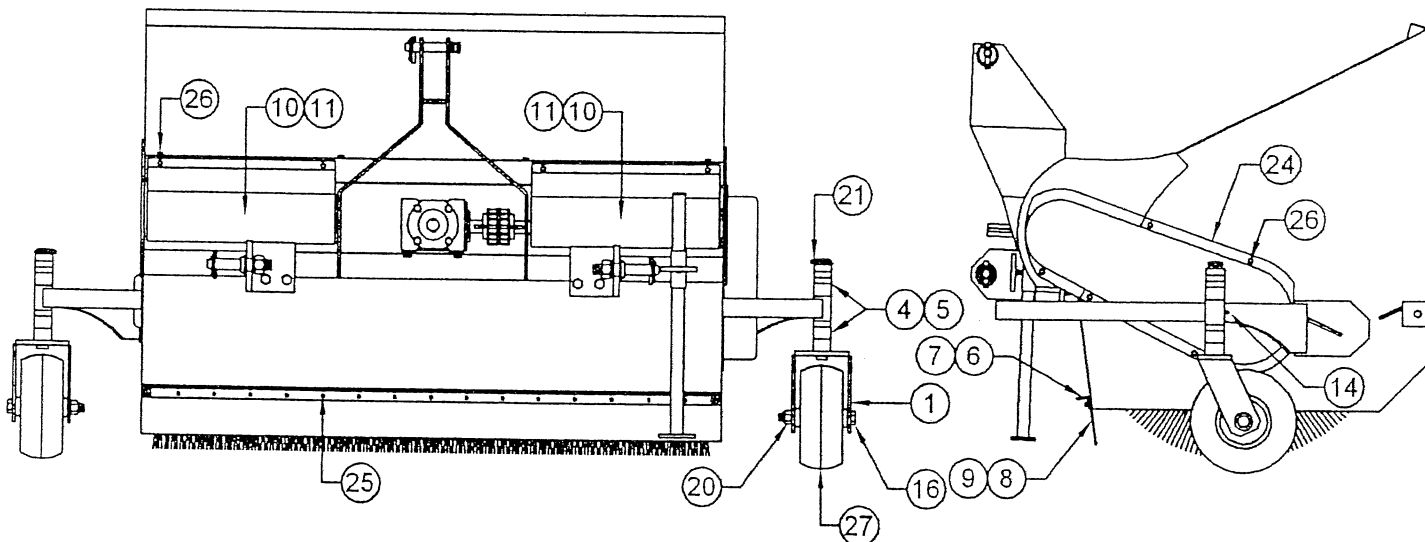
TPW-2448 & TPW-2460



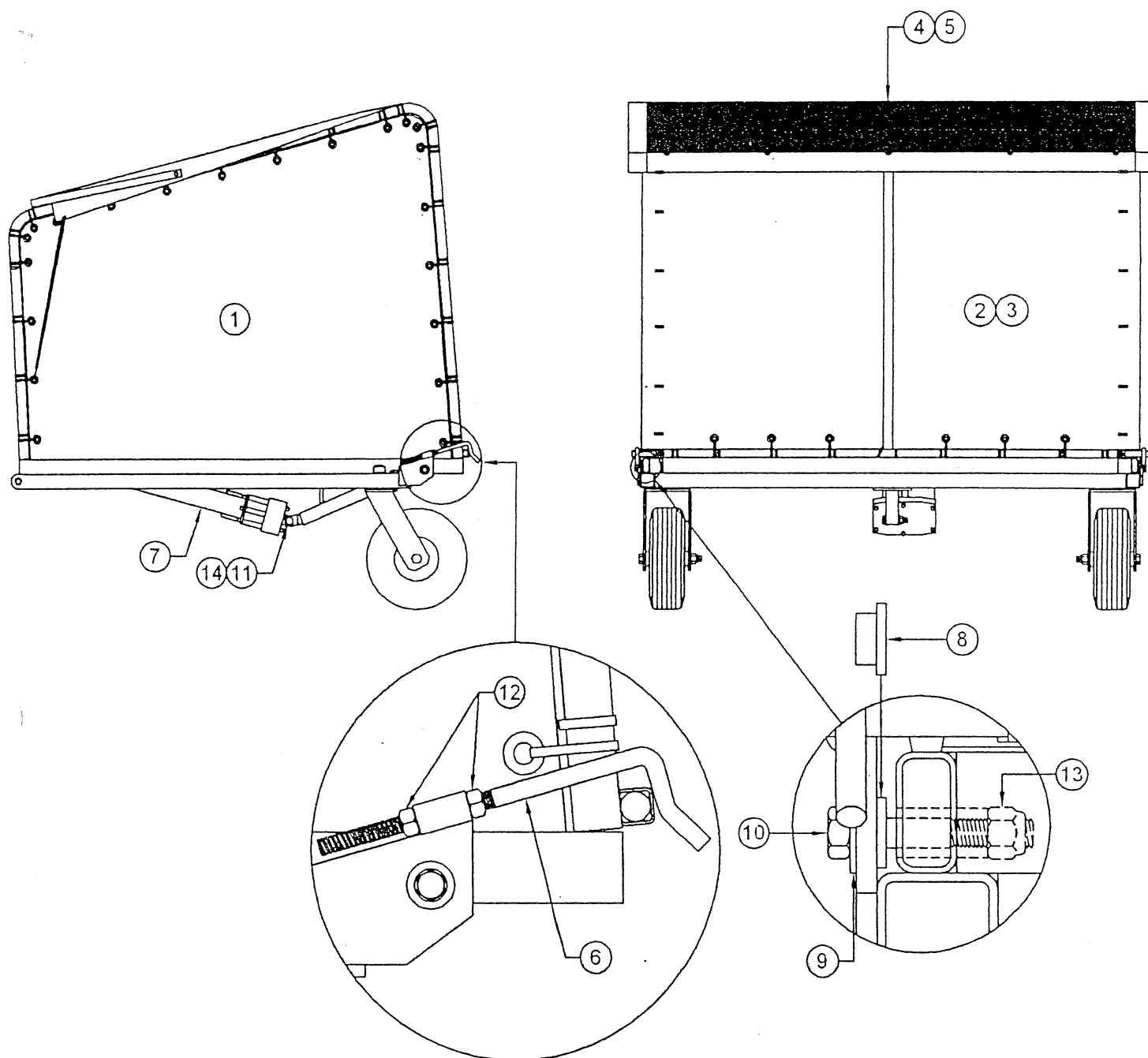
REF	DWG OR PART #	DESCRIPTION	QTY
1	TPW2448-4007	STAND SUB ASSEMBLY	1
2	TPW2448-4012	STAND ADJUSTMENT HANDLE SUB ASSEMBLY	1
3	TPW2448-0048 **	DRIVE SHAFT	1
4	TPW2460-0016 **	DRIVE SHAFT	1
5	TPW2448-0049	CHAIN ADJUSTER	1
6	BC-0000-1000	BEARING & COLLAR FOR 1" SHAFT	1
7	BP-0000-1000	BEARING FLANGE PLATE	2
8	CH-1000-5036	#50 CHAIN & FULL CONNECTOR - 36 LINK	1
9	CH-2000-5006	DOUBLE #50 CHAIN & FULL CONNECTOR - 6 LINK	1
10	EC-0000-1000	END CAP - PLASTIC - FOR 1" TUBE	1
11	GB-0000-1000	C-CW1003 GEAR BOX	1
12	HB-0313-0750	HEX BOLT - 5/16" x 3/4" - UNC - PLTD - GRD 5	3
13	HB-0375-1000	HEX BOLT - 3/8" x 1" - UNC - PLTD - GRD 5	4
14	HB-0375-3250	HEX BOLT - 3/8" x 3 1/4" - UNC - PLTD - GRD 5	1
15	KE-0250-1500	KEY - 1/4" x 1 1/2"	4
16	LN-0000-0313	NYLON INSERT LOCK NUT - 5/16" - UNC - PLTD - GRD 5	3
17	LN-0000-0375	NYLON INSERT LOCK NUT - 3/8" - UNC - PLTD - GRD 5	1
18	SP-5012-1000	50BS12 SPROCKET - 1" BORE	2
19	SP-5018-1000	50BS18 SPROCKET - 1" BORE	2



TPW-2448 & TPW-2460



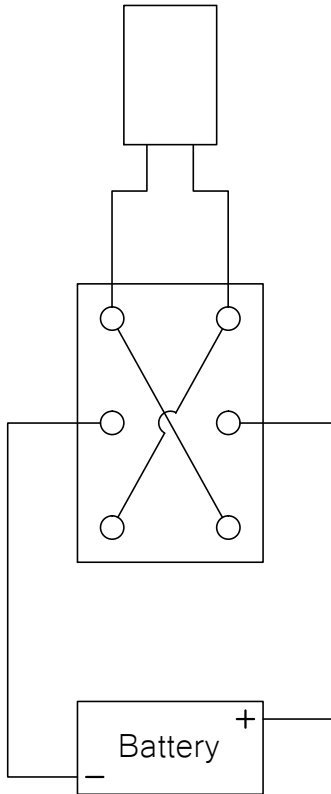
REF	DWG OR PART #	DESCRIPTION	QTY
1	TPW2448-4005	WHEEL BRACKET SUB ASSEMBLY	2
2	TPW2448-4006-L	HITCH TAB SUB ASSEMBLY	1
3	TPW2448-4006-R	HITCH TAB SUB ASSEMBLY	1
4	TPW2448-0012	SWIVEL SHAFT SPACER - LONG	6
5	TPW2448-0013	SWIVEL SHAFT SPACER - SHORT	8
6	TPW2448-0021 **	FLAP ANGLE	1
7	TPW2460-0014 **	FLAP ANGLE	1
8	TPW2448-0045 **	RUBBER FLAP	1
9	TPW2460-0015 **	RUBBER FLAP	1
10	TPW2448-0050 **	DRIVE SHAFT SHIELD	2
11	TPW2460-0017 **	DRIVE SHAFT SHIELD	2
12	TPW2448-0051 **	DRIVE SHAFT SHIELD	1
13	TPW2460-0018 **	DRIVE SHAFT SHIELD	1
14	GN-0000-1000	GREASE NIPPLE	2
15	HB-0500-3750	HEX BOLT - 1/2" x 3 3/4" - UNC - PLTD - GRD 5	4
16	HB-0625-6000	HEX BOLT - 5/8" x 6" - UNC - PLTD - GRD 5	2
17	HP-0000-0750	3 PT HITCH CENTER PIN - 3/4"	1
18	HP-0000-0875	3 PT HITCH PIN PACKAGE - LOWER - 7/8"	2
19	LN-0000-0500	NYLON INSERT LOCK NUT - 1/2" UNC - PLTD - RD 5	4
20	LN-0000-0625	NYLON INSERT LOCK NUT - 5/8" UNC - PLTD - GRD 5	2
21	LP-0000-0250	LINCH PIN - 1/4"	2
22	LP-0000-0375	LINCH PIN - 3/8"	3
23	SH-0000-0001	ROTOR SHAFT END GUARD - PURCHASED	1
24	SH-0000-0002	CHAIN GUARD - PURCHASED	1
25	SR-0188-0750	STEEL RIVET - 3/16" x 3/4"	17
26	ST-0000-0250	SELF TAPPING SCREW	15
27	WT-0000-1000	WHEEL & TIRE - 9.350 - 4NHS - SMOOTHY	2



REF	DWG OR PART #	DESCRIPTION	QTY
1	TPW2448-5010	SIDE CANVAS ASSEMBLY	2
2	TPW2448-5013 **	REAR CANVAS ASSEMBLY	1
3	TPW2460-5013 **	REAR CANVAS ASSEMBLY	1
4	TPW2448-5014 **	TOP MESH ASSEMBLY	1
5	TPW2460-5014 **	TOP MESH ASSEMBLY	1
6	TPW2448-0074	REAR LOCK BAR	2
7	AC-0000-0012	ACTUATOR - 12V - 12" STROKE	1
8	CB-0000-0375	COLLARED BUSHING - 3/8"	2
9	FW-0000-0375	USS FLAT WASHER - 3/8" - PLTD	2
10	HB-0375-2250	HEX BOLT - 3/8" x 2 1/4" - UNC - PLTD - GRD 5	2
11	HB-0500-2250	HEX BOLT - 1/2" x 2 1/4" - UNC - PLTD - GRD 5	2
12	HN-0000-0375	HEX NUT - 3/8" - UNC - PLTD - GRD 5	4
13	LN-0000-0375	NYLON INSERT LOCK NUT - 3/8" UNC - PLTD - GRD 5	2
14	LN-0000-0500	NYLON INSERT LOCK NUT - 1/2" UNC - PLTD - GRD 5	2

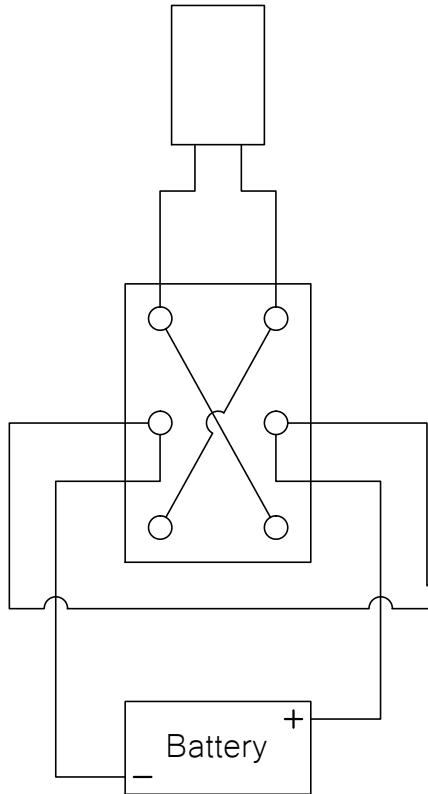
TPW Wiring Schematic

Basket Control

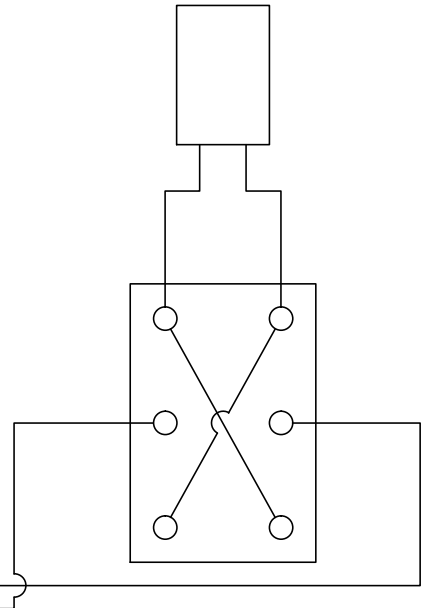


HPW Wiring Schematic

Basket Control

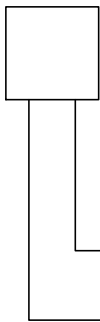


Height Control

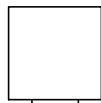


HMW Wiring Schematic

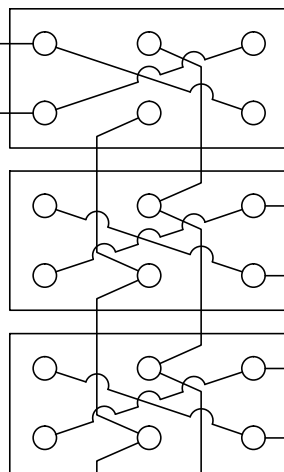
Throttle



Brush



Dump



Remote Wiring Schematic

